

**CROWN**  
LAMINATES & BEYOND

**CROWN DÉCOR PVT.LTD.**

One42, North Tower,  
Suite 401- 403, 4th Floor  
Ambli Bopal Road, B/H Ashok Vatika,  
Ahmedabad – 380058, Gujarat, India  
Contact : +91 79 4001 7979

**GLOBAL CONTACT POINT**

Unit 3, 5th Floor, The Regency,  
6 Hungerford Street, Kolkata - 700017, India  
Contact : +91 33 4066 0166, +91 9147077706  
E-mail : tabillo@crownlam.com

**TABILLO**<sup>(TM)</sup>  
*always on* **TOP**



[www.tabillo.in](http://www.tabillo.in)

**TABLE TOPS**

Horeca | Garden | Outdoor





**WHERE DESIGN IS...**



**POP  
PRECIOUS  
DURABLE  
PLAYFUL  
COLOURFUL  
ICONIC  
TRENDING**





# TABILLO<sup>TM</sup>

*always on* **TOP**

Tabillo is a tabletop manufactured with high-tech polymers which provide extreme durability for both interior and exterior use. These are composite table tops pressed under high temperature and pressure which are then cut to the required dimensions, inspected, packaged, and shipped to our customers. Tabillo has best in class, versatile features making it perfect for all outdoor, garden, and restaurant applications.

Our new collection has been carefully curated with the utmost attention to aesthetics, function and comfort. Tabillo can be adapted to any decor to create the perfect corporate, leisure or outdoor space. The designs boast of the beauty and texture without maintenance or fading. The extensive range of colors and finishes allows you to choose your customized style, whether classic or contemporary.

*It's up to you!*



## FEATURES

Tabillo is at the forefront of durable application. It is available in different sizes and thicknesses starting 10 mm and above to suit the design needs of the customers. It conforms to the LFGB rating and requires low maintenance.



Water Resistant



Heat Resistant



Colourfast



Scratch Resistant



Environment Friendly



Stain Resistant



Rot Resistant



Resistant To Cigarette Burns



Flame Retardant



Impact Resistant



Easy To Clean



Sleek Modern Design



Minimum Maintenance



Suitable for Contract use



Stability



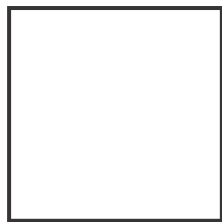
Indoor and Outdoor use



Weather Resistant

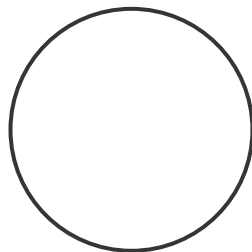


SIZES (in cm)



SQUARE

60 X 60  
65 X 65  
80 X 80



ROUND

60  
65  
80



RECTANGLE

120 X 80

**Thickness:**  
10mm and 12mm

★ Other Thickness on request

**Core**  
Black Core

★ White/Grey/Natural Core on request

★ Table Tops can be customised for other sizes and shapes

PACKAGING







## EDGES



Bullnose



Rounded



Straight

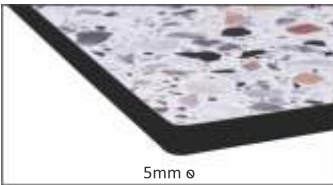


Bevelled

## SIDE PROFILE



15mm ø



5mm ø



Straight



Bevelled

## MAINTENANCE

Tabillo Tabletops are made of HPL, a very durable material with unmatched features which requires minimal maintenance. These have a non porous surface that makes it easy to clean with just a mild cleaning agent and soft cloth.

## PREVENTION

- Direct contact of hot surfaces should be avoided. Better use a pot holder.
- Avoid direct cutting on surface by a sharp object to prevent scratches.
- Avoid using aggressive cleaning agents. These panels can withstand normal soft cleaning agents
- Avoid shoving heavy and hard objects such as beer and shopping crates
- Avoid covering the top with a protective cover which may cause permanent stains due to weathering, suffocation or moulds. Let the top breath normally.



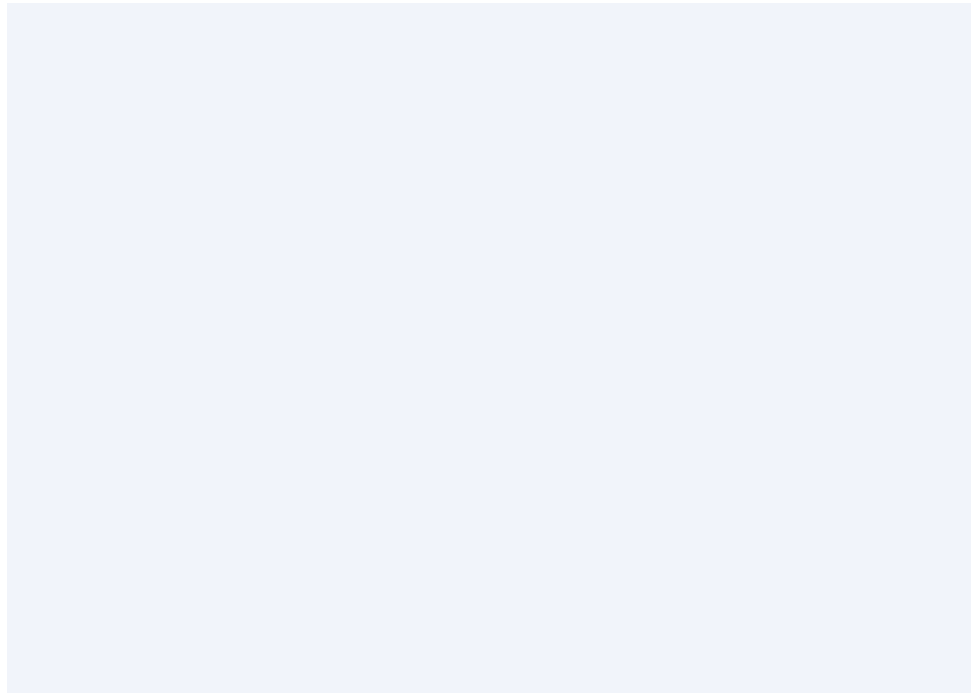






RC 11





RC 13



AF 702



RC 13 / RC 851 and various other  
shade of white)







*From the Woods...*





RC 406







RC 407







RC 580



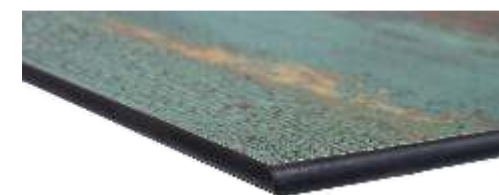
RC 477







RC 408







RC 459







RC 676



RC 665







RC 644







RC 656







RC 693



RC 698







RC 679







EXP 51

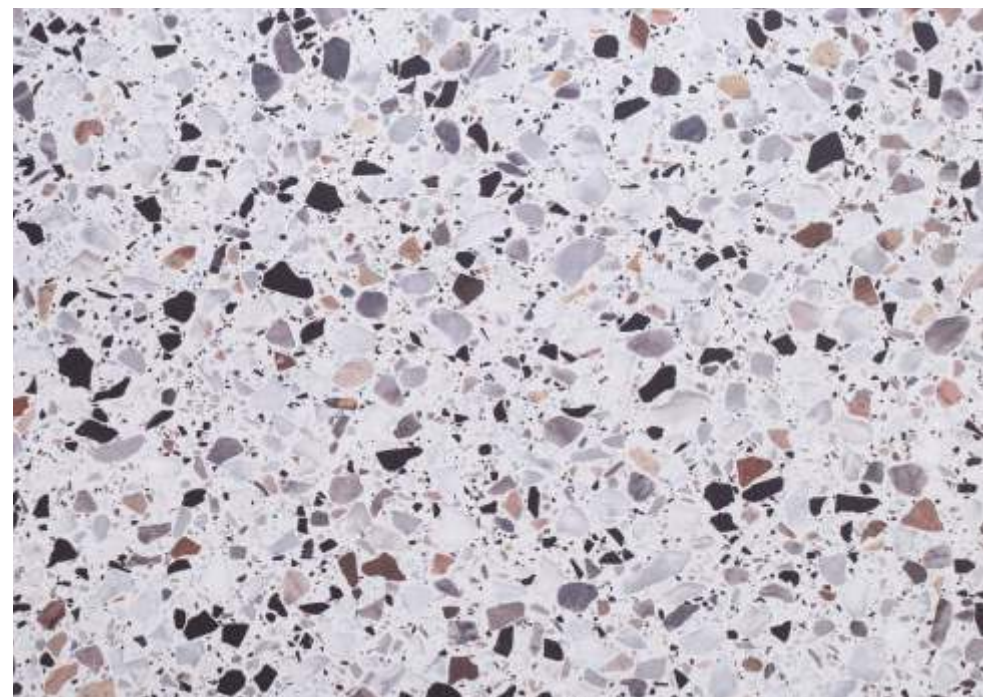






*From the Mountains...*





RC 669







RC 495



RC 479







RC 671







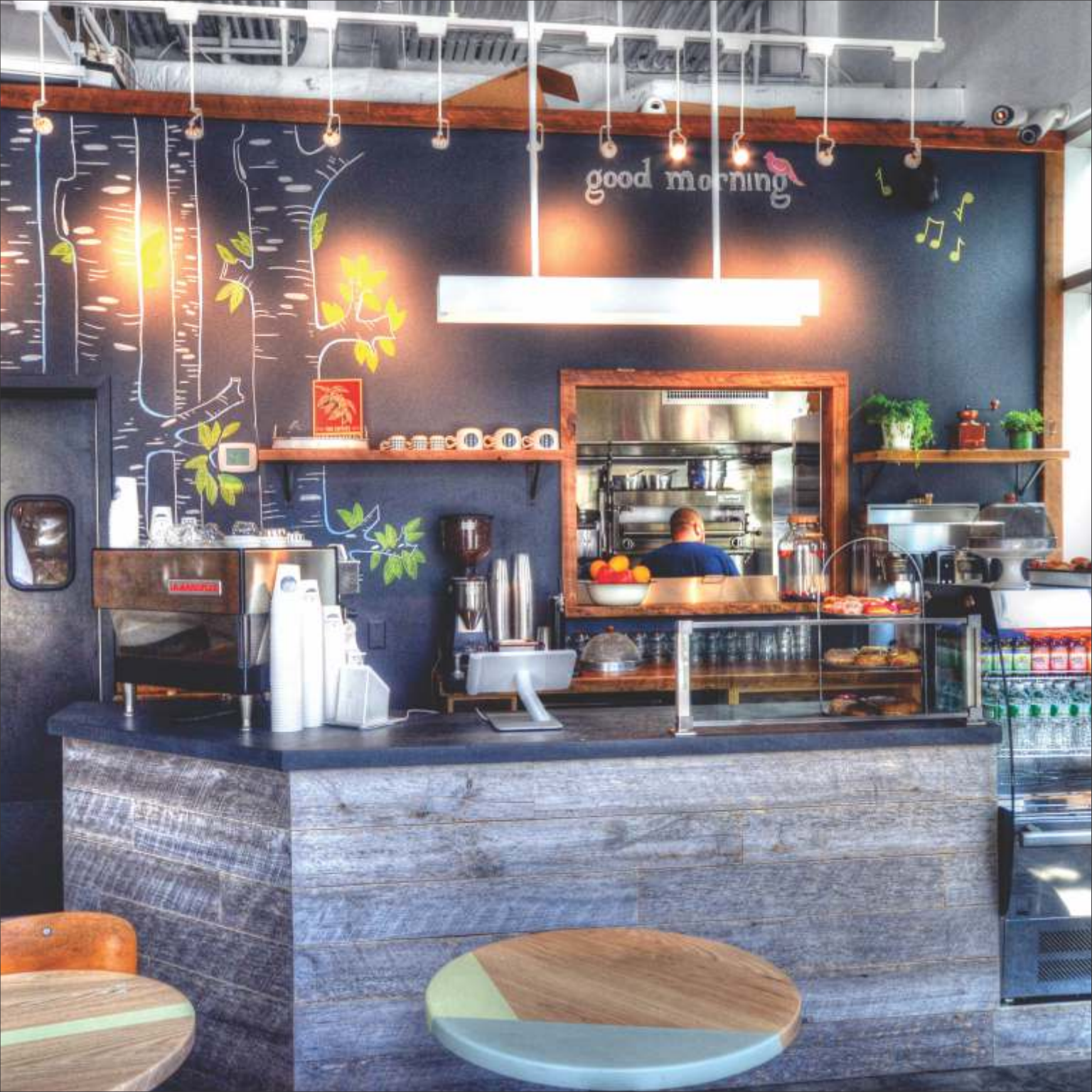
RC 567



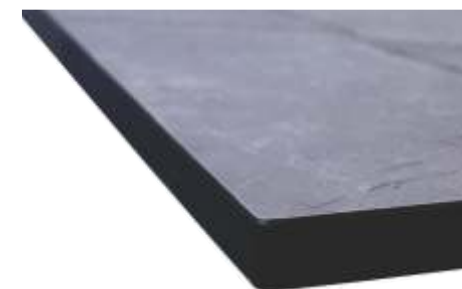
RC 550



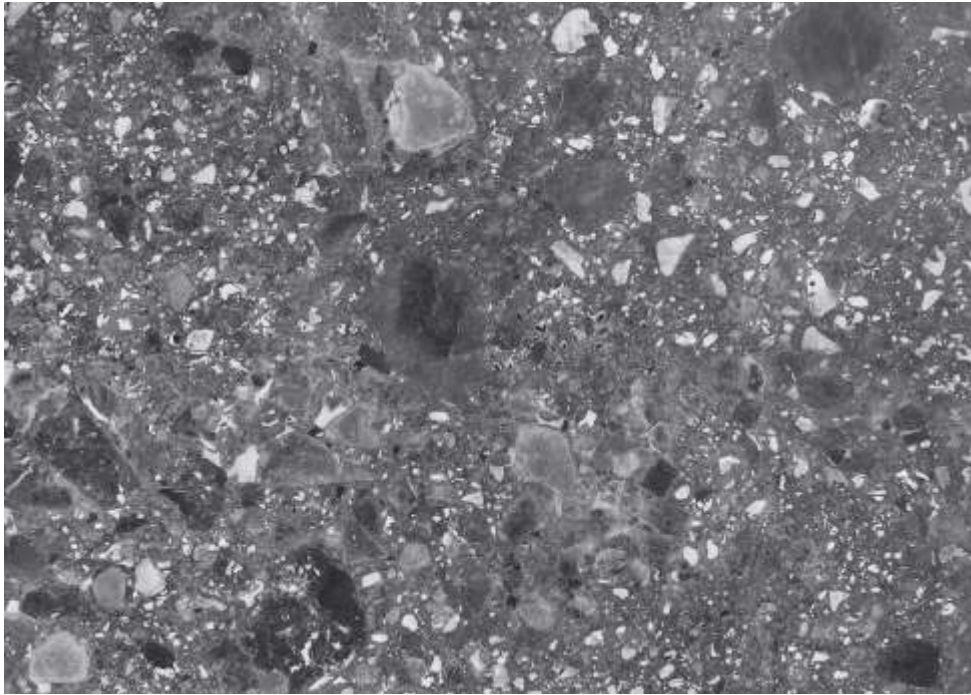




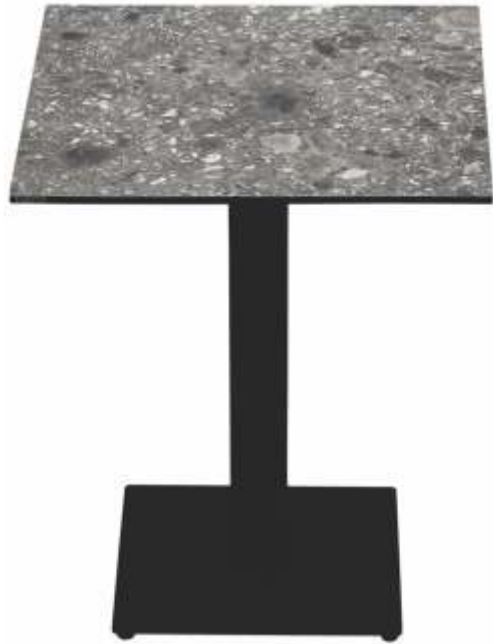
RC 672







RC 573



RC 572







RC 677







RC 687







RT 262







RC 927





