



***Royale Touche XCL is an innovative and versatile facade cladding solution that improves the look, performance, and longevity of any building.***

Royale Touche XCL is produced in a thermosetting press at high temperatures and pressures; additional double-hardened acrylic PUR resins further increase the durability of the panels. As a result, Royale Touche XCL panels are extremely durable and protect effectively against weather and UV

radiation. Royale Touche XCL also conforms to S-134 fire standards and is impact and scratch resistant. This durability allows Royale Touche XCL to be used in a variety of exterior and outdoor applications in addition to facade cladding such as balconies, outdoor furniture, ceilings, fences, and

more. Royale Touche XCL panels are easy to machine, install, and maintain while offering a wide range of decorative possibilities.



Fire  
Resistant



Easy to Install



Easy to Clean



Impact  
Resistant



Double  
Hardened



Anti-graffiti



UV Protected



Waterproof  
and weather  
resistant



Scratch  
Resistant



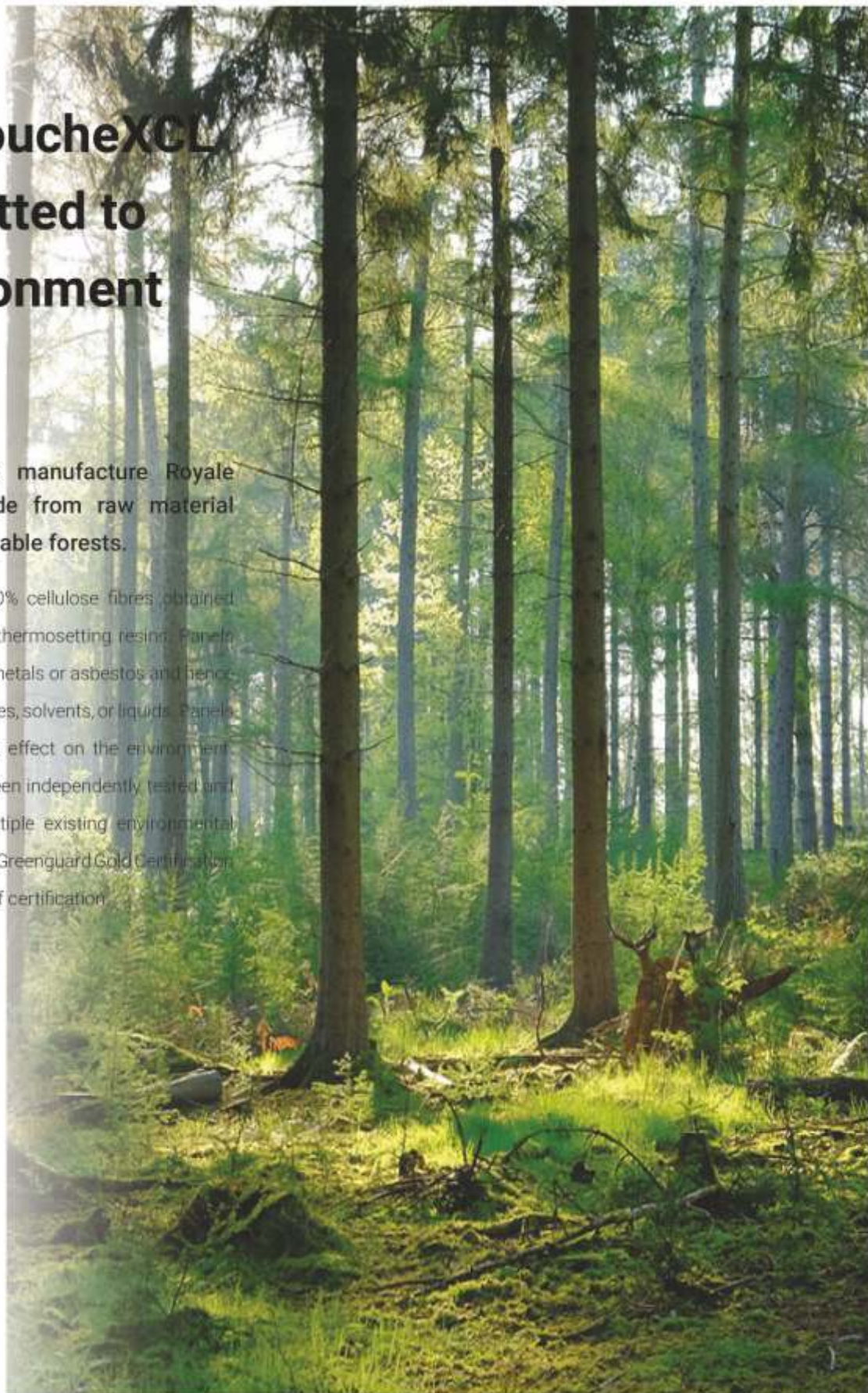
Improves Sound  
Insulation



# Royale ToucheXCL is committed to the environment

The paper used to manufacture Royale Touche XCL is made from raw material sourced from sustainable forests.

Panels are made from 80% cellulose fibres obtained from this paper and 20% thermosetting resins. Panels do not contain any heavy metals or asbestos and hence do not emit any gases, fumes, solvents, or liquids. Panels do not have any polluting effect on the environment. Royale Touche XCL has been independently tested and found to conform to multiple existing environmental certifications including the Greenguard Gold Certification and the Intertek Green Leaf certification.





# Sizing

## SIZING

A 1220 x 2440mm

B 1220 x 3050mm

C 1300 x 3050mm

## THICKNESS \*

6, 8, 10

## DECOR

Double-sided Decor  
Single-sided Decor  
(available upon request)

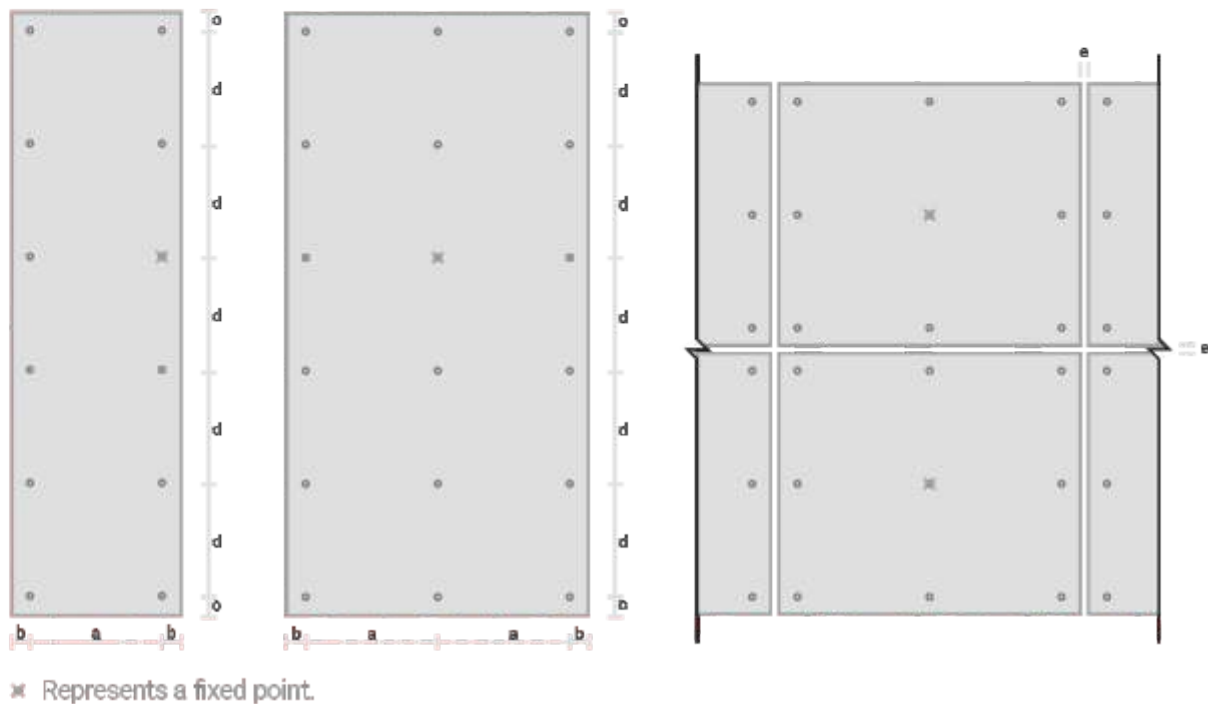
## FINISH

Suede Finish

Note: Custom finishes  
available upon request.



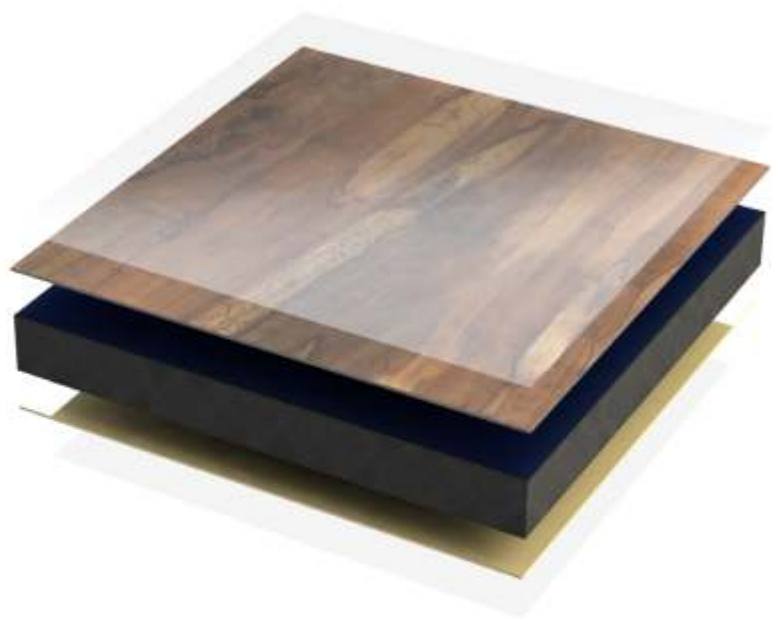
# Spacing



The diagrams above show the optimal space between fasteners and the edge of the panel. It also displays the optimal spacing between individual panels. These are guidelines and can be altered appropriately depending on the project.

Panel Thickness *	Maximum Fastener Spacing (a) *	Minimum Edge Distance ( b, c ) *	Maximum Fastener Spacing (d) *	Expansion Joint (e) *
6mm	600mm	50, 20mm	600mm	6-10mm
8mm	750mm	50, 20mm	750mm	6-10mm
10mm	900mm	50, 20mm	900mm	6-10mm

# Performance



## Properties

Properties	Standard Value	CrownXCL Value
Apparent Density	1.35 g/cm <sup>3</sup>	1.45 g/cm <sup>3</sup>
Flexural Strength	80 N/mm <sup>2</sup>	114 N/mm <sup>2</sup>
Modulus of elasticity	9000 N/mm <sup>2</sup>	13966 N/mm <sup>2</sup>
Tensile Strength	60 N/mm <sup>2</sup>	66 N/mm <sup>2</sup>
Dimensional stability at elevated temperatures	Lengthwise: 0.40% Crosswise: 0.80%	Lengthwise: 0.25% Crosswise: 0.40%
Artificial weathering	Grey scale: Rating 3 Appearance: Rating 4	Grey scale: Rating 4 Appearance: Rating 4
UV-light resistance	Grey scale: Rating 3 Appearance: Rating 4	Grey scale: Rating 4 Appearance: Rating 4

## Fire Behaviour

Valid in	Test Method	CrownXCL Value
Canada	CAN/ULC S134	Passed
Europe	CSN EN 13501-1+A1	B-s1, d0 ( Passed )
USA	NFPA 285	Passed
Canada + USA	ASTM E 84	Flame Spread Index: 10 Smoke Developed: 0

For a complete list of tests and certifications, visit our website at [www.springvalleycorp.com](http://www.springvalleycorp.com).

## ***Installation Systems***

Royale Touche installation system is a thermally broken, ventilated rainscreen system that provides maximum efficiency at cost savings compared to alternatives. Royale Touche installation prevents thermal bridging caused by other installation systems. This lessens the environmental impact of the building and can provide significant heating and cooling cost savings for your building. Royale Touche installation system provides ventilation behind the panel, which prevents moisture buildup and increases the longevity of panels.

***RIVET SYSTEM  
(BOX SECTION)***



***ADHESIVE SYSTEM***



***RIVET SYSTEM  
(T SECTION)***



***CONCEALED SYSTEM***





## Accessories

			
BOX SECTION	DEAD LOAD BRACKET	WINDLOAD BRACKET	U BRACKET
			
T- SECTION	L BRACKET	NUTBOLT	FASTERNER
			
ALUMINIUM C+RAIL	FIXED POINT STAPLE	RIVET	MOUTH PIECE
			
SELF DRILLING SCREW	PRIMER	SILICONE	TAPE
			
CUTTING MACHINE	DRILLING MACHINE		RIVET GUN

## PROJECT PICTURES



Kolkata



Indore



Bangalore



Ranchi



Mangalore

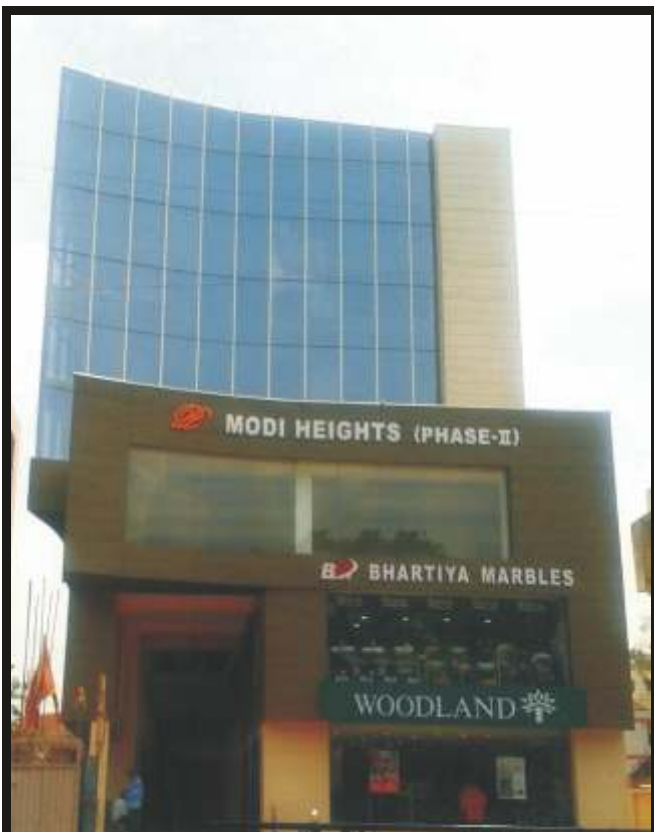
## PROJECT PICTURES



Kolkata



Kolkata



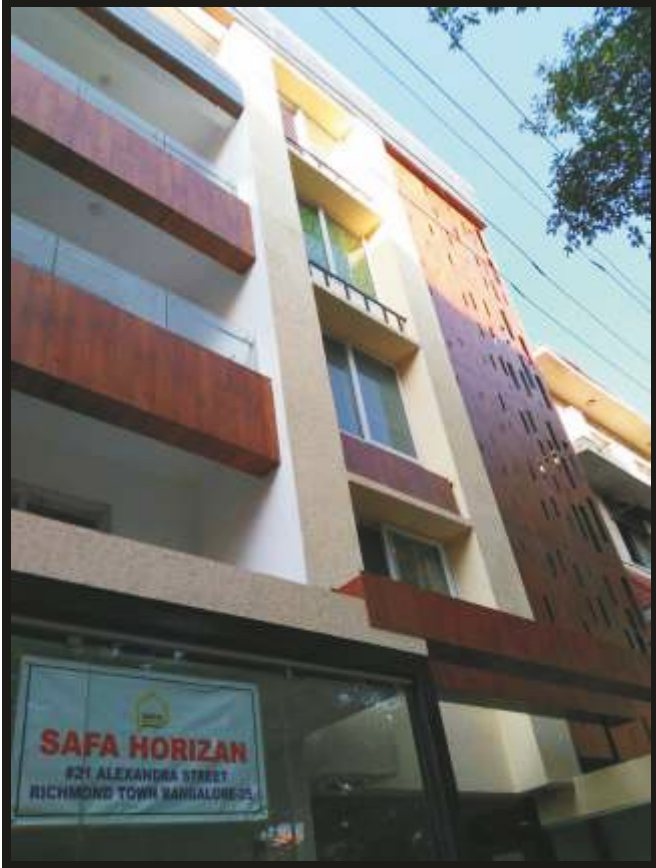
Ranchi



Bangalore



## PROJECT PICTURES



Bangalore



Chandigarh



Chandigarh



Bangalore



Mumbai

## PROJECT PICTURES



Bangalore



Chandigarh



Kerela



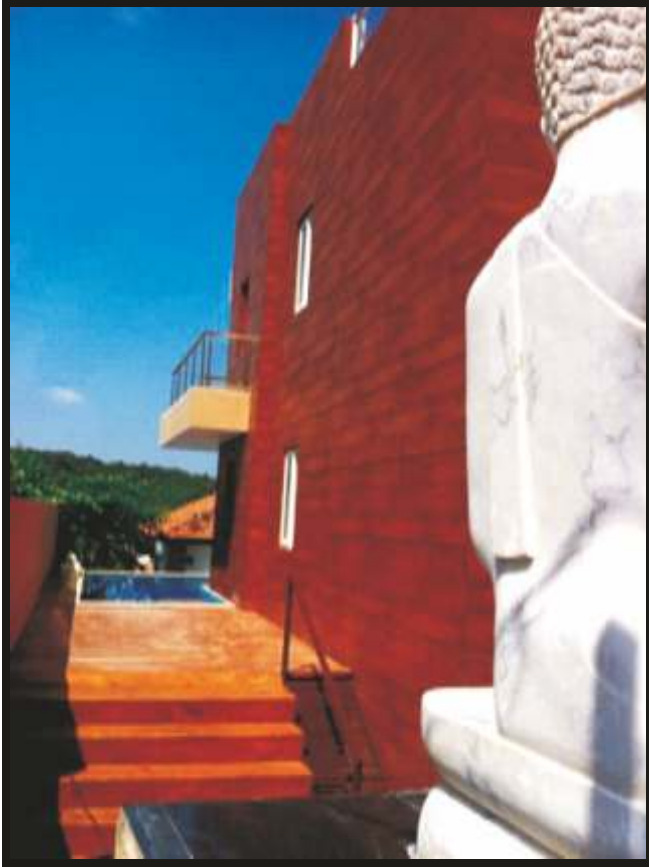
Bangalore



Chandigarh



## PROJECT PICTURES



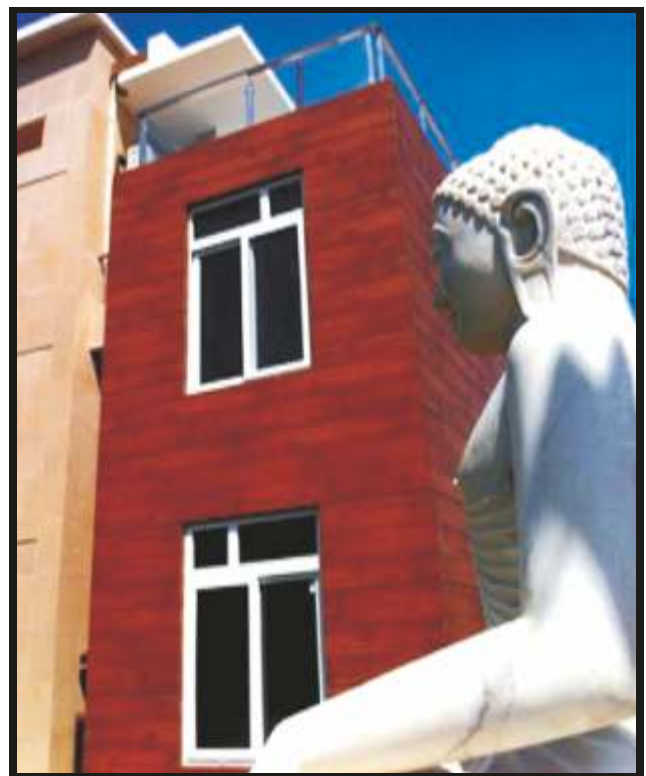
Goa



Ranchi



Hyderabad



Goa



## PROJECT PICTURES



Hyderabad



Mumbai



Delhi



Cochin



Kolkata



## PROJECT PICTURES



Kolkata



Puri



Mumbai



Bangalore



Lonavala

## PROJECT PICTURES



Kerela



Ranchi



Hyderabad



## PROJECT PICTURES



Kolkata



Faridabad



Delhi



Delhi

## PROJECT PICTURES



Chennai



Kerala



Bilaspur



Mumbai



Mumbai



## PROJECT PICTURES





## PROJECT PICTURES



## PROJECT PICTURES



Switzerland



Romanshorn



Telvaiv



Switzerland



Gorgia



Barcelona



## PROJECT PICTURES



Switzerland



Switzerland



Switzerland

## PROJECT PICTURES



Cyprus



Cyprus



Cimasol



France



Moscow



## PROJECT PICTURES



Switzerland



Switzerland



Moscow



Switzerland



Switzerland



Belgium

## PROJECT PICTURES



Israel



Switzerland



Haiti



## PROJECT PICTURES



Holland



Lithuania



North Europe

## PROJECT PICTURES





## PROJECT PICTURES



## PROJECT PICTURES





## PROJECT PICTURES





## PROJECT PICTURES







### **Crown Decor Pvt. Ltd.**

2/A N Malayalay, 2nd Floor,  
3 Woodburn Park, Kolkata - 700 020, India.

Ph : +91 33 4066 0166, 4073 0166

E-mail : [kanishka@royaletouche.com](mailto:kanishka@royaletouche.com)